

**"EXPANDING FACILITIES
FOR GROWING MINISTRIES . . .
A MATTER OF THE HEART"**

*"Take ye from among you an offering unto the Lord
whoever is of a willing heart . . . and they came
everyone whose heart stirred up and everyone
whom his spirit made willing, and they brought
the **Lord's** offering to the work of the tabernacle
of the congregation . . ."*

Exodus 35:21



**The Central Presbyterian Church
7700 Davis Drive
Clayton, Missouri 63105**



To the Congregation
Central Presbyterian Church
St. Louis, Missouri

Dear Friends:

God has called Central in a unique way to be His witness in St. Louis and to minister to His people.

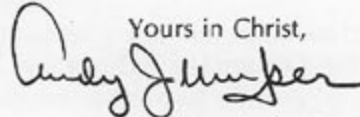
As we have sought to be faithful, God has abundantly blessed that ministry. Now God is calling us to an even greater ministry and witness. To be obedient to God's call means we must expand the physical facilities we use in our ministry. This expansion has been approved by the Session and by the Congregation.

As we enter the time when we bring our gifts to provide for expanded ministry, our theme is taken from Exodus, chapter 35 and 36. Will you and your family please begin reading these chapters regularly and prayerfully?

As you read those chapters, you will see how God called his people to build the tabernacle. But please note 35:21 where the Bible tells us that the people's hearts were stirred and their spirits made willing to bring the Lord their offerings.

This will mean real sacrifice for most of us. To raise the funds we need means some of us will have to make adjustments in our life-styles and perhaps put off or give up some things we planned to do. That will certainly be true of my family as we are ready to make any sacrifice necessary to do our part. I believe the congregation as a whole is ready to do the same thing.

As we enter this new phase of growth and obedience to God in the ministry to which he calls us, let us pray for a mighty outpouring of the Holy Spirit to bless our efforts.

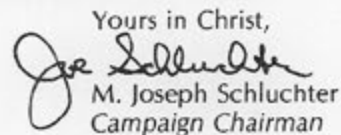
Yours in Christ,

Andrew A. Jumper

Dear Fellow Members of
Central Presbyterian Church

The Financial Drive to provide Central with added facilities for ministry has provided my family and I an opportunity to consider our commitment to this body of believers. It has also been a time to reflect on the ministries and the members and their impact on our lives.

As we look back over the past six years and review our spiritual growth, we can count more than a dozen ministries that have directly contributed to our knowledge and love for our Lord, Jesus Christ. From the warmth of fellowship at Women of the Church and the Businessmen's Luncheon to the challenges given in Sunday School and the Worship Service, God speaks to us daily through Central's ministries and people.

As Peggy and I have sought God's will as to our commitment to Central's ongoing ministries, we have asked ourselves "How important is this body of believers in our lives and what financial sacrifice on our part will reflect this importance?" As you pray about your commitment to Central's ministries, I urge you to ask yourself this same question. I pray that your heart will be stirred to help provide for the growing ministries at Central.

Yours in Christ,

M. Joseph Schluchter
Campaign Chairman



LONG RANGE PLANNING COMMITTEE STUDY

The Long Range Planning Committee has been in existence for three years under the dedicated and able leadership of Clint Schattgen. The Session appointed this committee to monitor the growth and development of the congregation in order to stay aware of the present as well as future needs.

Throughout this study, every alternative for future growth was studied and considered. The Committee's report to the Session was reviewed carefully and its recommendations included:

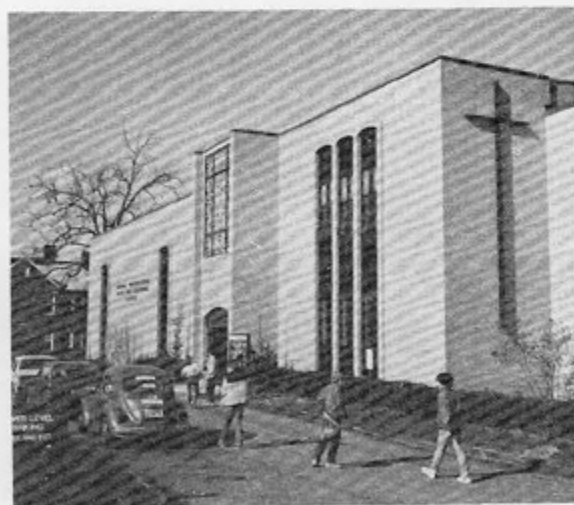
1. Additional parking
2. Chancel renovation and a new organ
3. Additional educational space
4. Additional office space

With regard to parking, the Session authorized a study by a professional group to survey this situation and make recommendations. This study has determined that a new level to our parking garage was not the solution to our long-range problem. The reason being that a new level, at a minimum cost of \$600,000 would provide only 100 new spaces and within a year and a half would be back where we are today, given the rate of growth of our congregation. For that reason, other solutions to this problem are being tried. We have initiated a new shuttle service to two remote parking areas. This is the best long-term solution to our parking needs and in the long run is much more inexpensive. However, the success of this program depends on the cooperation and response of you, the members of the congregation.

With regard to major sanctuary renovation and a new organ, while both are needed and demand our attention, the Committee did not feel that was our first priority since other matters were more pressing. That left us with two other needs — more educational space and additional office space. Our new building project involves a program that would meet both of those needs.

"WHAT HAS HAPPENED AT CENTRAL TO CAUSE THESE NEEDS?"

When we planned our new education building at 700 Hanley, we could not imagine how Central would grow. In April of 1978 our new facility on Hanley Road was completed and we moved in. Our Sunday School growth has been such that we were extremely over-crowded, so when the new facility was opened it was desperately needed. However, as new space became available, our growth soon began to push that facility of capacity.



CHURCH GROWTH

First, let's look at what's happening to church attendance. On **CHART A** you see our average Sunday morning attendance from 1971 through 1981. When Dr. Jumper came in 1970 our attendance was averaging about 650 a Sunday. As you can see by the chart, it has increased steadily each year and in 1981 we ran off the top of the chart! In the fall of 1981, from September through December, our average attendance was 1,316. Had we not begun a third service in September, we would not have been able to handle attendance. Also, when we speak of averages, we need to remember that many of those Sundays were much larger than the average. What is happening to our attendance is typified by what happened Christmas Eve when we began a third service and saw our total attendance for those services go over the 2200 mark. By 1985 we are projecting an average Sunday morning attendance of 1500.

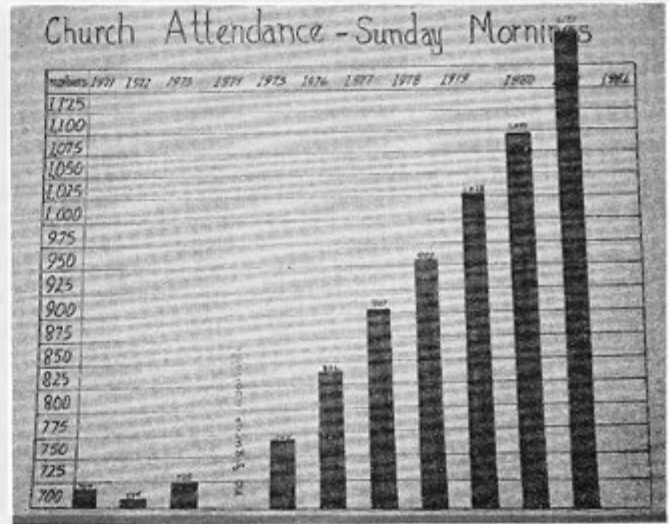


CHART A

Another indicator of growth is overall church membership. **CHART B** shows us our growth since 1975. The darker lines represents new members received and the lighter lines represent members lost through death, inactivity, or transfer. That represents a new growth of 537 members in a seven year period.

As the church and its program has grown, so has our staff. We have been able to keep the growth of secretarial help minimized by modernizing our equipment. However, we are now at a point where we must make provision for additional office space, not only for secretarial help, but for additional professional staff as our congregation grows.

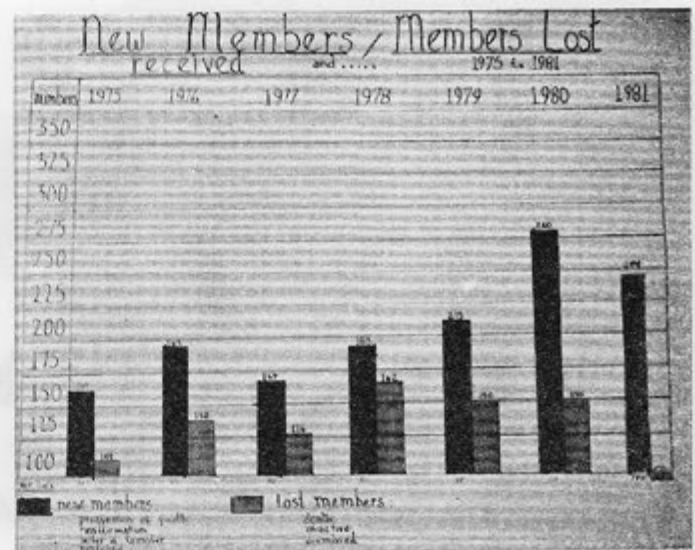


CHART B

HOW IS OUR CHURCH GROWTH AFFECTING CENTRAL'S SUNDAY SCHOOL?

In the 1969/70 Sunday School year (the Sunday School runs from September to September) we had an average attendance of 312. By 1980/81 it has more than doubled to over 700 and in the latest Sunday School year we are now reaching for the 800 mark. What is important about **CHART C** is the jump in attendance after we opened the new building. Attendance tends to level off when capacity is reached and when new space is opened, attendance increases to fill the space. For the next two years, the growth continued, but at a much reduced rate as our facility has neared capacity. So, not only are our educational facilities at capacity, if we want to continue to grow, we need to provide space for the growth. Based on reasonable projection of our growth for years to come by 1985 we will be averaging almost 1100 pupils a Sunday.

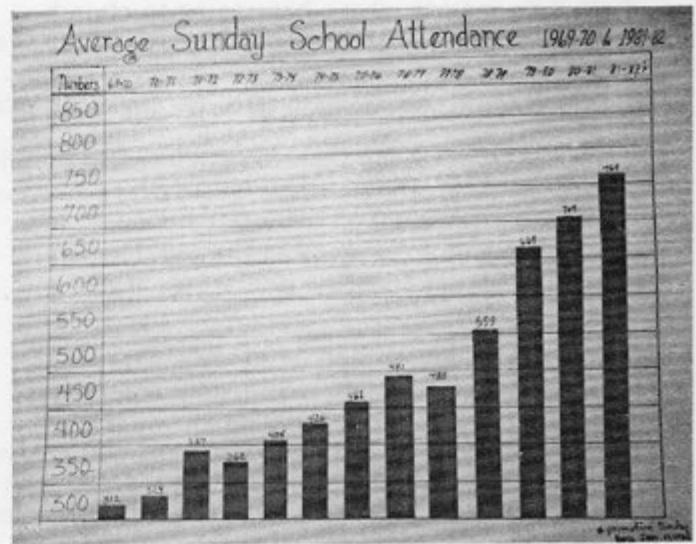


CHART C

However, we need to remind ourselves about averages — on many Sundays we are required to handle numbers far above our average. For example, in 1982 already our attendance has gone over 900 on several occasions.



This constant growth in Sunday School attendance has been so great that presently we are out of classroom space in most of our children and youth divisions.

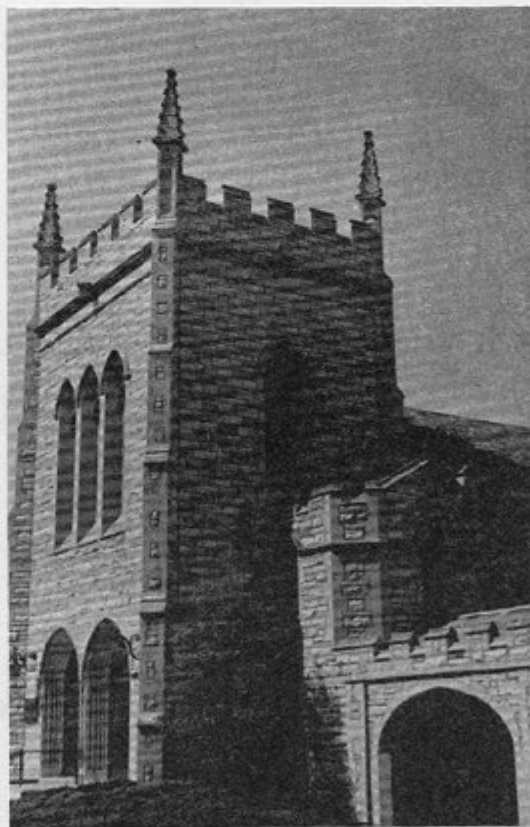
As for adult Sunday School, presently we have more adult classes than at any time in our history. Unfortunately, we don't have places to put them all. As our church continues to grow and the number of adult classes grows, too, we need some place to put them.

Throughout this entire growing period at Central, we have completed work in several areas that needed renovation and expansion. Some of these areas included: building a large well-equipped main office and business administrator office, renovation of the dining hall, expansion of the Sr. High areas, renovating, painting and carpeting the sanctuary building, and renovating and painting the pre-school area and activity room.

In addition, a new playground was installed and the art room for Central Christian School was finally completed. Also, a great deal of work was done in the Sanctuary itself, including refinishing the large wooden doors and refinishing the woodwork in the chancel area.

All of this is to highlight the fact that our present facilities are in excellent condition. This does not mean we are finished, for a facility as large as ours and as old, demands a great deal of maintenance and up-keep. Also, as we continue to grow and as needs expand, there will continue to be modifications of a minor nature.

With that background information, we now present our new building program to you.



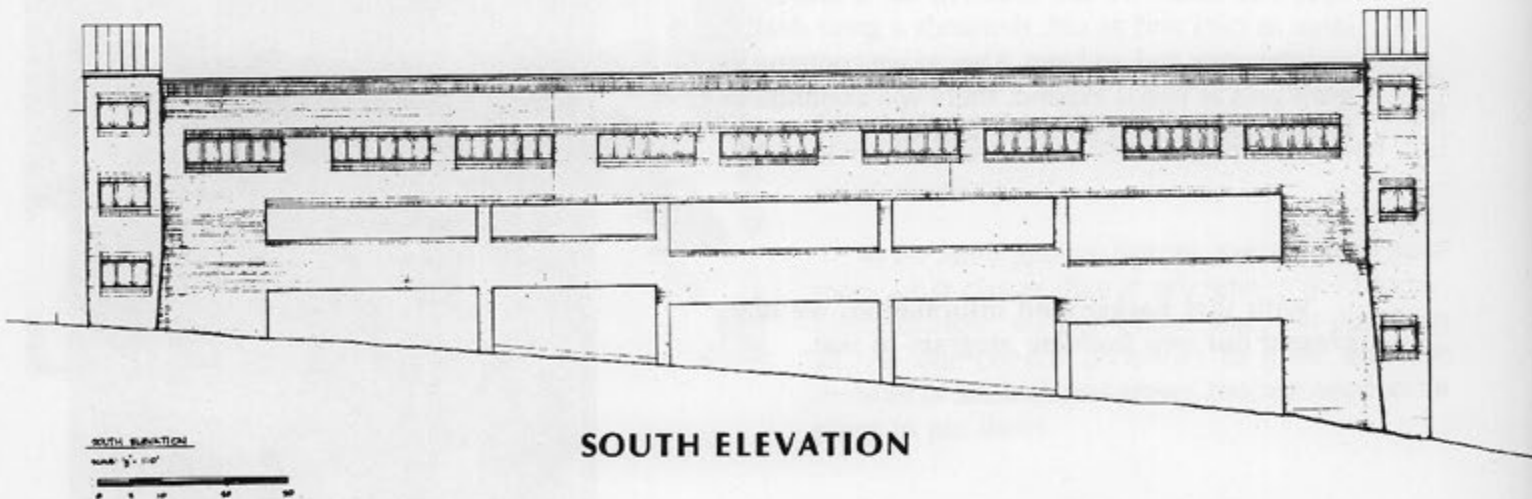
PLANS FOR FACILITY EXPANSION

1. THE RENOVATION OF 700 HANLEY BUILDING.

On the opposite page is a picture of our plans for the lower level of the 700 building on Hanley Road. At point **A** we will relocate this small nursery, cut a door between it and the next room and make this into the 9th grade area. At point **B** we will remove all of these walls, open this area up, carpet it, sound-proof it, and make it into the 7th and 8th grade area. At point **C** we will open up a passageway between this facility and the basement of the original building. At point **D** we will remove walls and open this area up and at point **E** the present art room of the Central Christian School will be relocated and this will become a game room for the youth. In addition, at point **F** we will cut a new opening to make this area available to the Senior High's without having to go outside.

2. NEW EDUCATIONAL FACILITY.

Our next project is for a new educational building to be built over the upper level parking deck. Here is a side view of how it will look. You are standing south of the building, looking north. This does not disturb any of our present parking.



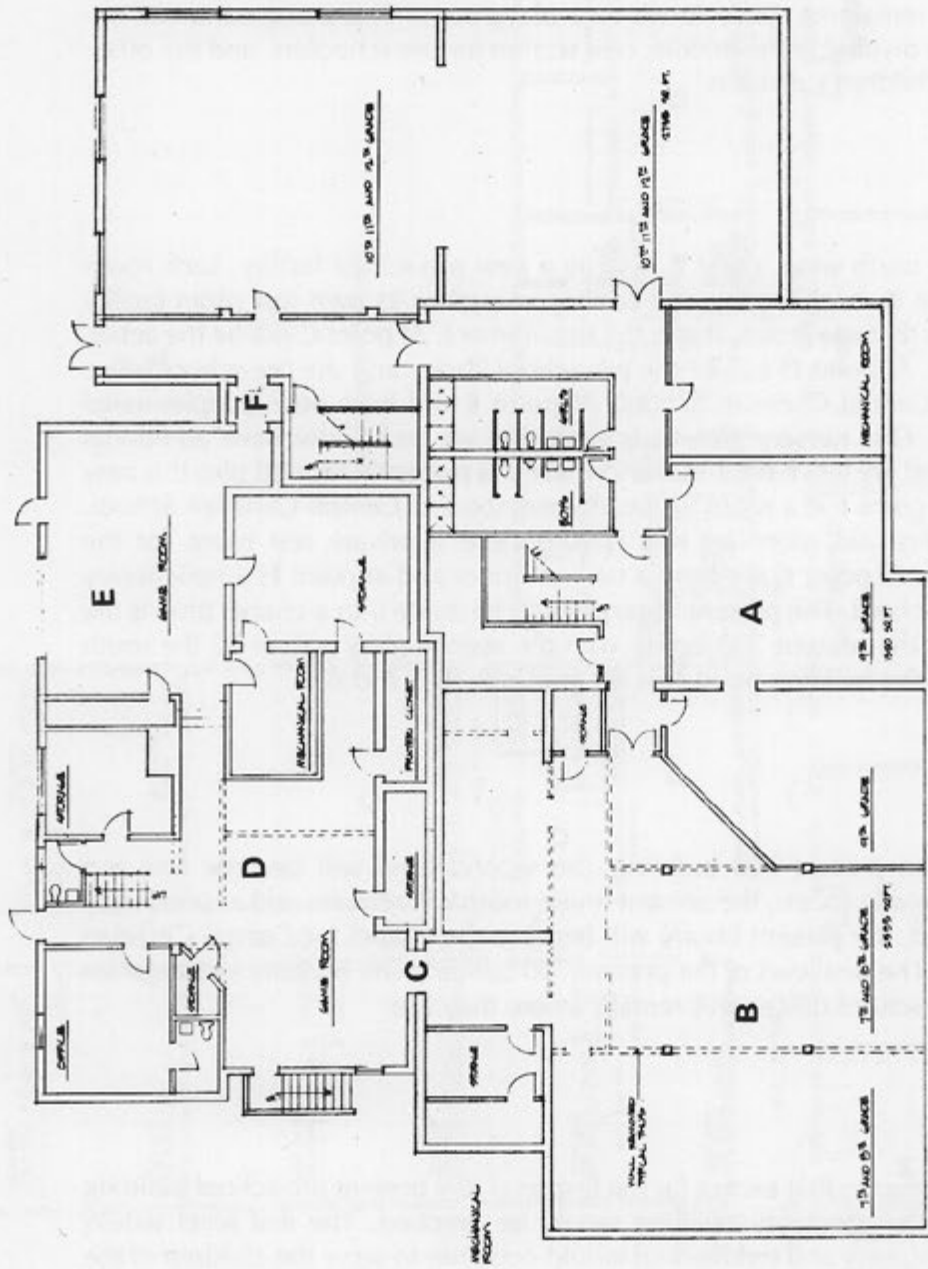


CHART D



LOWER FLOOR PLAN
SCALE: 1/8" = 1'-0"

PLANS FOR FACILITY EXPANSION

This entire new level will be completely decked, and its area will be as large as the upper parking deck. The new building will consist of two wings, and the remaining space **A** will be a playground. This playground will actually be divided in the middle, one section for pre-schoolers, and the other for the children's division.

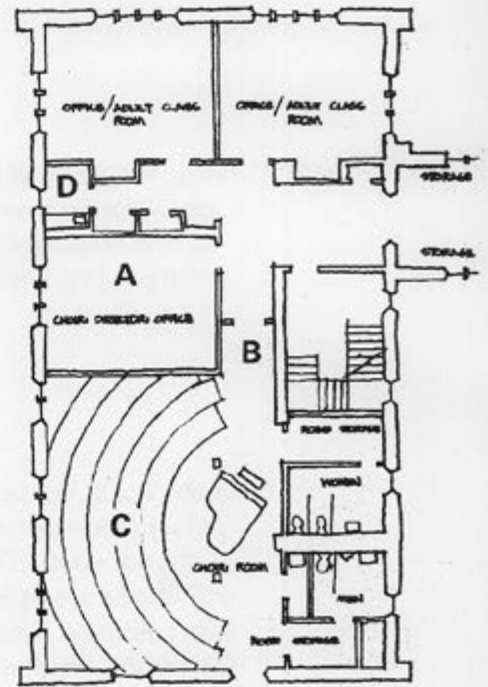
The north wing, point **B**, will be a new pre-school facility. Each room will have its own heating and cooling as well as its own rest room facility since for that age group, that is the requirement. At point **C** will be the activity room. At point **D** will be the pre-school library and the pre-school office for the Central Christian School. At point **E** will be a new, supplemental nursery. Our nursery growth is such that we must now have additional space and we will have a nursery where it is presently located plus this new one. At point **F** is a room for faculty members of Central Christian School, plus a first aid room for sick children and a private rest room for the teachers. At point **G** we have a new art room and at point **H** a new library for the School. The present library would be made into a chapel (that is the room in the present 700 facility with the stained glass wall in it.) the south wing of the building point **I**, is for grades 3, 4, 5 and 6.

In the present 700 building, the second level will become first and second grade rooms, the present music room will remain, and as previously indicated, the present library will become the chapel for Central Christian School. The first level of the present 700 building will become kindergarten and the school offices will remain where they are.

This means that except for the first level, the present pre-school building next to the sanctuary building would be emptied. The first level would remain nursery and toddler and would continue to serve the children of the Women of the Church on Tuesday. However, levels two and three would now be available for new uses.

3. RE-LOCATION OF THE PRESENT PRE-SCHOOL BUILDING NEXT TO SANCTUARY.

Here is a picture of our proposal for the second level of this building. The two end rooms will become office space or adult class rooms. The room at point **A** is the office for the Minister of Music as well as the music library. At point **B** a new door will be put across the hall and all of the interior walls for the rooms will be removed, opening up the entire area. Risers at point **C** will be installed and this will become the choir room. The choir could rehearse without being interrupted, will have their own rest rooms, robe storage area, and will have a kitchenette at point **D** to fix their refreshments.

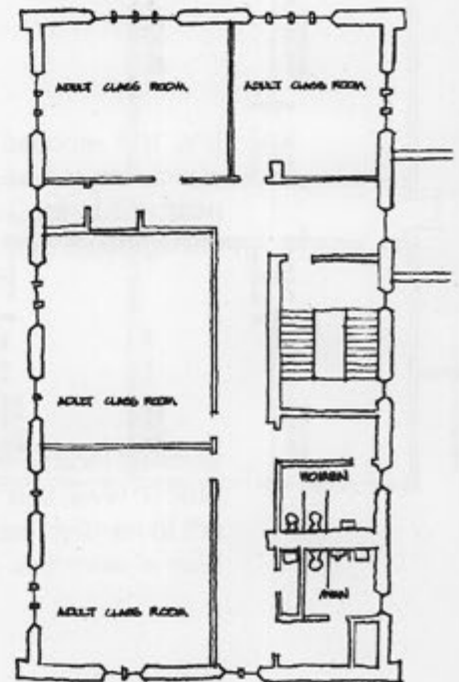


FIRST FLOOR PLAN

SCALE: 1/8" = 1'-0"



The upper level of this building will require little modification and will become adult class room space. This plan gives us four nice rooms for adults, plus the present choir room for a minimum of five new adult areas. Not only will we be able to re-locate classes with poor facilities, we have room to add new classes. Not only will these new facilities benefit our growing church and Sunday School program but the new building will enable the Central Christian School to expand tremendously to meet their growing needs as well.



SECOND FLOOR PLAN

SCALE: 1/8" = 1'-0"



WHAT WILL BE THE COST OF CARRYING OUT THESE PLANS AND HOW CAN I TAKE PART?

The Lord has called Central Church to be a light in St. Louis. This will not happen without a serious commitment on each of our parts. This commitment will entail sacrifice as we pass up some hoped for thing — possibly a new car, a vacation or other long-awaited desires. God has promised his blessing on those who sacrifice for his work and we believe he will be faithful.

The estimated cost of Central's new building program is \$3,000,000. Remaining faithful to God's direction that we are to "owe no man anything" the Session has agreed that we will proceed with the needed work **only** when the money is in hand or in sight. (expected before we are required to pay for work performed).

Our prayer is that each member of the congregation will pray to know God's will for their commitment and then pledge over a three year period — May, 1982 to May, 1985. This gift can be in the form of cash, appreciated securities or real estate. This actually allows for a contribution which could be applied to four different tax years. If it is possible for members to pay a larger portion of their pledge during the first or second year, this will allow the church to move ahead on the project and reduce the results of inflation on the cost of the new facilities.

After you have had opportunity to pray about what part you will have in providing for the expanded facilities for Central's growing ministries please fill out and return the enclosed pledge card.



THE GROWING MINISTRIES OF CENTRAL CHURCH

STEERING COMMITTEE

Robert E. Bacon
Robert A. Busse
Winthrop R. Corey
Robert H. Denckhoff, Jr.
Charles A. Hoppe
Douglas D. Joyce
John J. Reed
M. Joseph Schluchter, Chairman
Eric T. Schmidt
Vern H. Schneider

STAFF

William M. Flannagan
Kenneth G. Hartley
Andrew A. Jumper

